

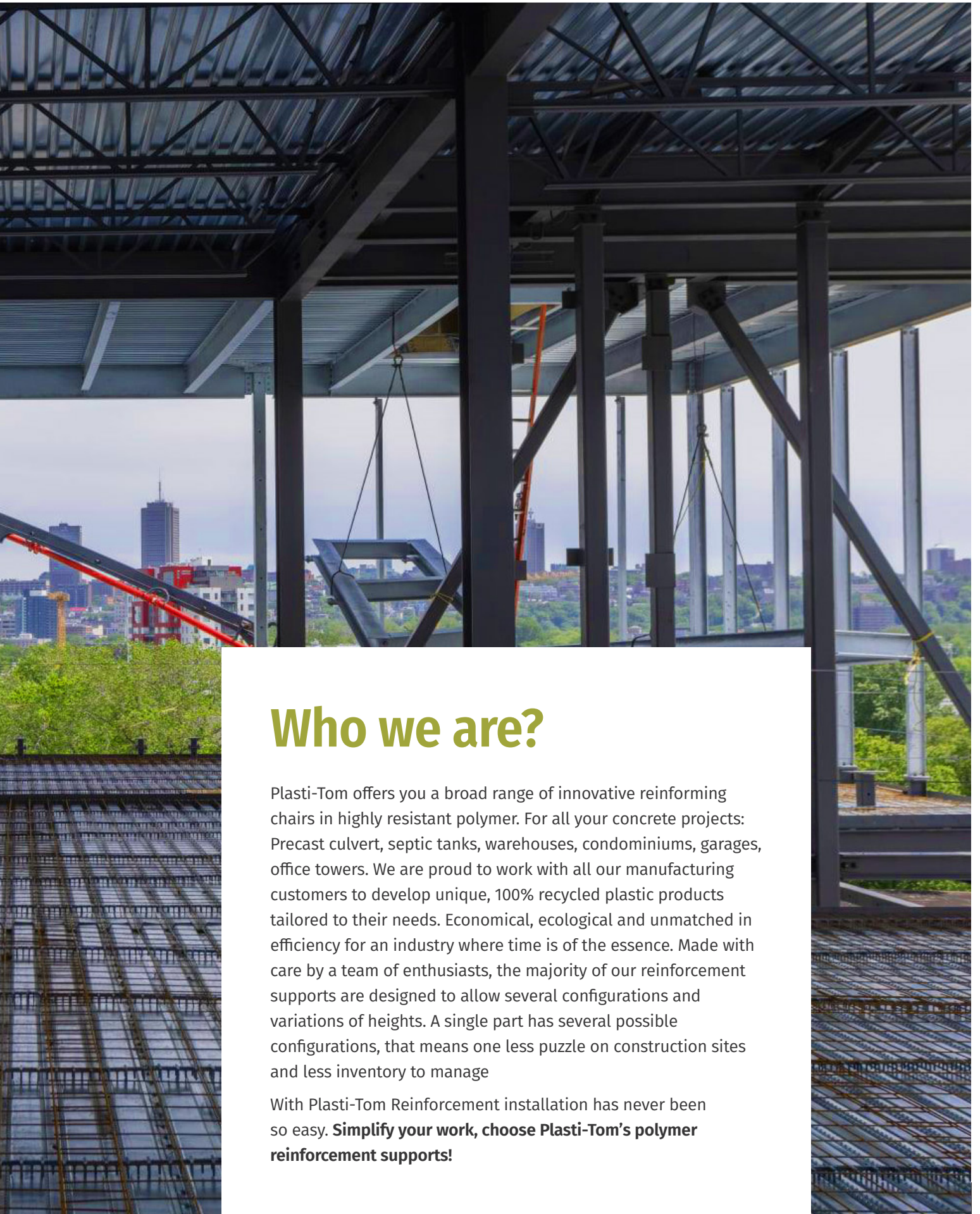


PLASTI-TOM

2026

# Product Catalog





## Who we are?

Plasti-Tom offers you a broad range of innovative reinforcing chairs in highly resistant polymer. For all your concrete projects: Precast culvert, septic tanks, warehouses, condominiums, garages, office towers. We are proud to work with all our manufacturing customers to develop unique, 100% recycled plastic products tailored to their needs. Economical, ecological and unmatched in efficiency for an industry where time is of the essence. Made with care by a team of enthusiasts, the majority of our reinforcement supports are designed to allow several configurations and variations of heights. A single part has several possible configurations, that means one less puzzle on construction sites and less inventory to manage

With Plasti-Tom Reinforcement installation has never been so easy. **Simplify your work, choose Plasti-Tom's polymer reinforcement supports!**



# Table of contents

Slab Bolster	7
High Chair	8
Steel Chair	10
Sand plate	12
Carnie Cap	13
Pile spacer	14
Speedies	15
Universal Clip Chair	18
Clip Chair	19
Circular Chair	20
Circular Chair (MESH)	22
Spacer hook	23
Lattice spacer	24
Vertical support	25
Lifting insert	26
Installation tool	27
Lifting tool	27
Certified Manhole step	28
Rungs-Installation hammer	28
Protective Pad	29
Panel ID	29
Cap	30





# Slab Bolster

Slab Bolster can be used to support a large area of wire mesh or rebar reinforcement. Made from tough polyethylene, their longitudinal shape makes installing rebar quick and easy. What's more, Slab Bolster base lugs are designed to leave no marks when stripping forms. This product allows optimum concrete flow to help prevent voids or linear cracks in concrete.

Shipped in 48-inch lengths, our Slabs Bolster are often used with our Metal Chairs and High Chairs. They are used to support a first or second row of reinforcement on your top slabs.



Product name	Cover	Quantity per bag	Quantity per pallet	Compression Test (lbs)
SLAB-075	0.75 in (19 mm)	96 ft/bag	7,392 ft/pal	400
SLAB-100	1 in (25 mm)	96 ft/bag	6,720 ft/pal	400
SLAB-125	1.25 in (32 mm)	96 ft/bag	6,720 ft/pal	400
SLAB-150	1.5 in (38 mm)	96 ft/bag	6,720 ft/pal	400
SLAB-175	1.75 in (44 mm)	72 ft/bag	6,048 ft/pal	400
SLAB-200	2 in (52 mm)	72 ft/bag	4,536 ft/pal	400
SLAB-225	2.25 in (57 mm)	72 ft/bag	4,536 ft/pal	400
SLAB-250	2.5 in (63 mm)	72 ft/bag	3,528 ft/pal	400
SLAB-300	3 in (76 mm)	72 ft/bag	3,024 ft/pal	400



# High Chairs

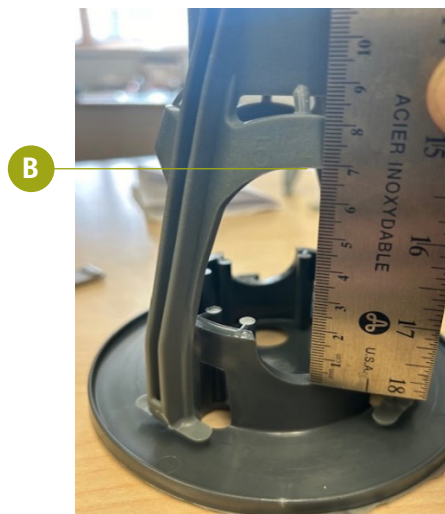
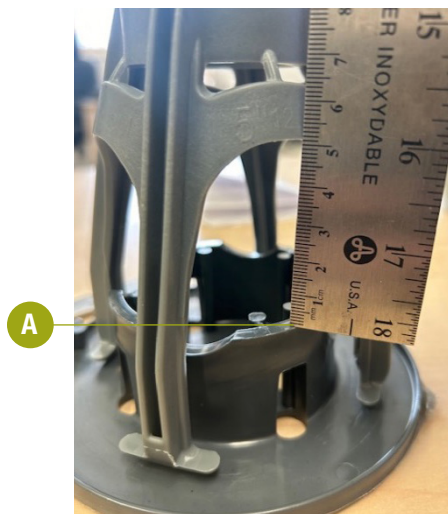
High Chairs are designed for strength. Two heights on the same rebar chair mean unrivalled versatility. Our High Chairs are the most robust of the market, being manufactured with a resin specially designed for their application. What's more, the lugs at the base of the High chairs are designed to leave no marks when the formwork is removed. The High chairs are often used in pair with our slab bolster. They serve to support a second or third row of rebars on your top slabs. Their unique shape makes work easier for users, they can easily be placed through the Slab Bolster or other chairs reinforcement. This product ensures optimum concrete flow to help prevent voids or linear cracks in concrete.



Product name	Height	Quantity per bag	Quantity per pallet	Compression Test (lbs)
TWR-3035	3 - 3.5 in (76-90 mm)	180	5,400 parts/pal	650
TWR-4045	4 - 4.5 in (104-114 mm)	120	3,600 parts/pal	575
TWR-5055	5 - 5.5 in (127-140 mm)	120	3,600 parts/pal	1,150
TWR-6065	6 - 6.5 in (154-166 mm)	80	2,400 parts/pal	1,150
TWR-7075	7 - 7.5 in (180-192 mm)	70	2,100 parts/pal	1,100
TWR-8085	8 - 8.5 in (205-218 mm)	60	1,800 parts/pal	1,050
TWR-9095	9 - 9.5 in (230-243 mm)	50	1,500 parts/pal	1,000
TWR-10 -10.5	10 - 10.5 in (254 - 267 mm)	50	1,500 parts/pal	950
TWR-11 -11.5	11 - 11.5 po (280 - 292 mm)	50	1,500 parts/pal	950
TWR-12 -12.5	12 - 12.5 po (305 - 318 mm)	45	1,350 parts/pal	950

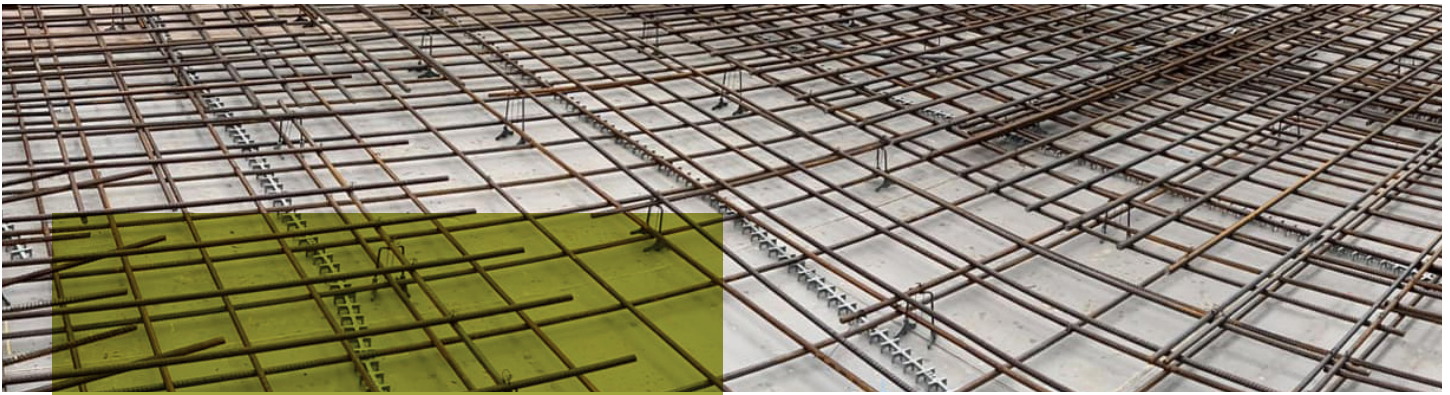
### Spacing between high chairs and sand plates

	Base 75	Base 1015	Base 2025	Base 3035	Base 4000
TWR-3035	45 mm	X	X	X	X
TWR-4045	70 mm	60 mm	X	X	X
TWR-5055	76 mm	66 mm	X	X	X
TWR-6065	77 mm	66 mm	40 mm	X	X
TWR-7075	77 mm	66 mm	40 mm	X	X
TWR-8085	81 mm	69 mm	44 mm	20 mm	X
TWR-9095	101 mm	90 mm	61 mm	40 mm	28 mm
TWR-10 -10.5	135 mm	123 mm	98 mm	73 mm	60 mm
TWR-11 -11.5	135 mm	123 mm	98 mm	73 mm	60 mm
TWR-12 -12.5	135 mm	123 mm	98 mm	73 mm	60 mm



\* If you use the lowest space on the sand plate to place your rebar, add 17.5mm to the spacing in the above table

The calculated spacing is between the highest point of the base (A) VS the lowest point of the tower (B).



# Steel Chair

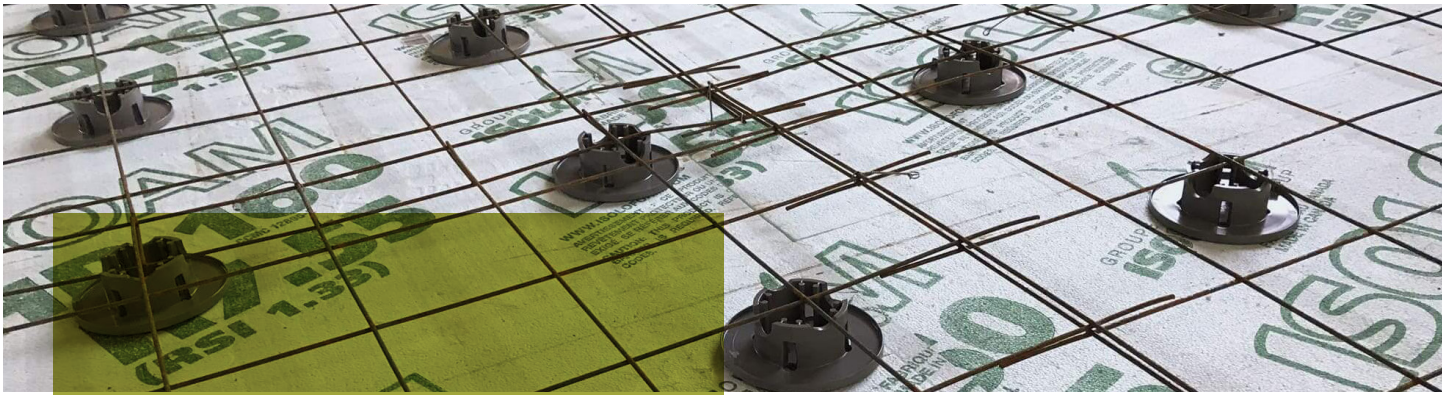
Available from 4" to 16" in 0.5" increments, the chairs are designed to support horizontal steel studs when working on top slabs. All chair sizes can accommodate any size of reinforcement or wire mesh. What's more, their flexibility means you can reduce your inventory. Metal Reinforcement Chairs are designed for use on construction sites, allowing concrete to flow freely.

What's more, the legs at the base of the chairs are designed to leave no marks when form are stripped. Made from HDPE, a highly resistant plastic that won't rust or degrade. The frame is made of 1/4" high-density steel rods for chairs ranging from 4 to 9.5 inches. While 5/16" steel rods are used on our chairs ranging in height from 10 to 16 inches.

Metal frame chairs are often used in pair with our slab bolster products. They are used to support a second or third row of reinforcement on your top slabs.

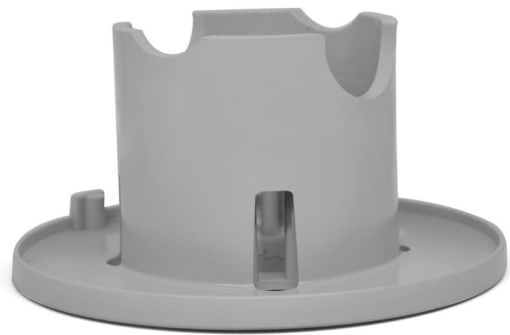


Product name	Metal stem	Height	Quantity per bag	Quantity per pallet
SCH-40.14	0.25 in (6.35 mm)	4 in (104 mm)	250	3,750 parts/pal
SCH-45.14	0.25 in (6.35 mm)	4.5 in (114 mm)	250	3,750 parts/pal
SCH-50.14	0.25 in (6.35 mm)	5 in (127 mm)	250	3,750 parts/pal
SCH-55.14	0.25 in (6.35 mm)	5.5 in (140 mm)	250	3,750 parts/pal
SCH-60.14	0.25 in (6.35 mm)	6 in (154 mm)	250	3,750 parts/pal
SCH-65.14	0.25 in (6.35 mm)	6.5 in (166 mm)	250	3,750 parts/pal
SCH-70.14	0.25 in (6.35 mm)	7 in (180 mm)	200	3,000 parts/pal
SCH-75.14	0.25 in (6.35 mm)	7.5 in (192 mm)	200	3,000 parts/pal
SCH-80.14	0.25 in (6.35 mm)	8 in (205 mm)	200	3,000 parts/pal
SCH-85.14	0.25 in (6.35 mm)	8.5 in (218 mm)	140	2,100 parts/pal
SCH-90.14	0.3125 in (7.9 mm)	9 in (230 mm)	120	1,800 parts/pal
SCH-95.14	0.3125 in (7.9 mm)	9.5 in (243 mm)	120	1,800 parts/pal
SCH-100.516	0.3125 in (7.9 mm)	10 in (254 mm)	100	1,500 parts/pal
SCH-105.516	0.3125 in (7.9 mm)	10.5 in (267 mm)	100	1,500 parts/pal
SCH-110.516	0.3125 in (7.9 mm)	11 in (279 mm)	100	1,500 parts/pal
SCH-115.516	0.3125 in (7.9 mm)	11.5 in (292 mm)	100	1,500 parts/pal
SCH-120.516	0.3125 in (7.9 mm)	12 in (305 mm)	100	1,500 parts/pal
SCH-125.516	0.3125 in (7.9 mm)	12.5 in (318 mm)	100	1,500 parts/pal
SCH-130.516	0.3125 in (7.9 mm)	13 in (330 mm)	100	1,500 parts/pal
SCH-135.516	0.3125 in (7.9 mm)	13.5 in (343 mm)	100	1,500 parts/pal
SCH-140.516	0.3125 in (7.9 mm)	14 in (356 mm)	100	1,500 parts/pal
SCH-145.516	0.3125 in (7.9 mm)	14.5 in (368 mm)	100	1,500 parts/pal
SCH-150.516	0.3125 in (7.9 mm)	15 in (381 mm)	100	1,500 parts/pal
SCH-155.516	0.3125 in (7.9 mm)	15.5 in (394 mm)	100	1,500 parts/pal
SCH-160.516	0.3125 in (7.9 mm)	16 in (406 mm)	50	750 parts/pal
SCH-165.516	0.3125 in (7.9 mm)	16.5 in (419 mm)	50	750 parts/pal
SCH-170.516	0.3125 in (7.9 mm)	17 in (432 mm)	50	750 parts/pal
SCH-175.516	0.3125 in (7.9 mm)	17.5 in (445 mm)	50	750 parts/pal
SCH-180.516	0.3125 in (7.9 mm)	18 in (457 mm)	50	750 parts/pal

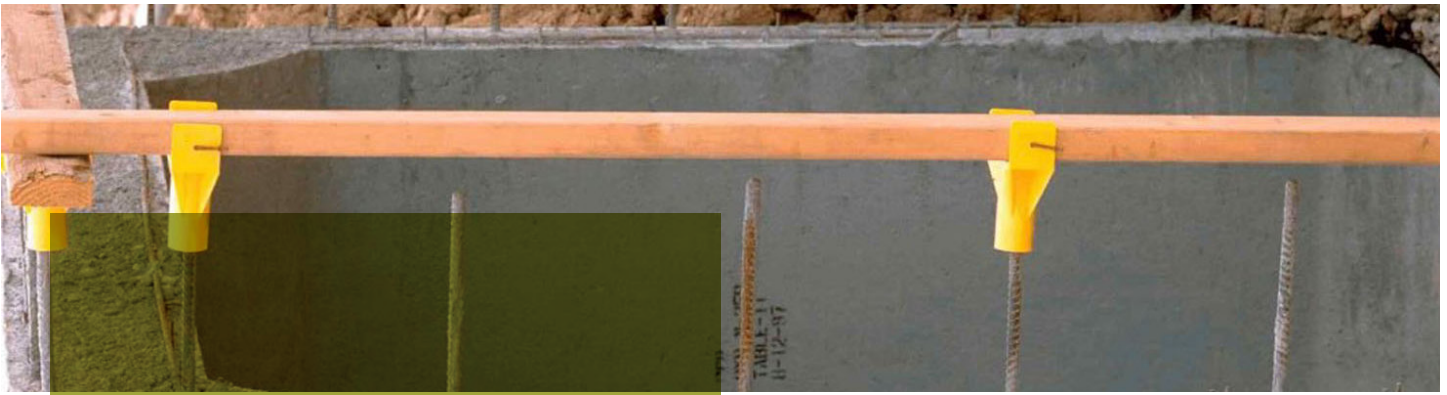


# Sand plate

PLASTI-TOM bases have been specially designed to replace bricks on floor slabs and footings. They offer a lighter alternative to brick, but are just as strong. With two heights on the same piece, they make work easier for users. PLASTI-TOM's base is also designed to support our High Chairs. This product ensures optimum concrete flow, helping to prevent voids or linear cracks in concrete.



Product name	Height	Quantity per bag	Quantity per pallet	Compression Test (lbs)
BASE-0075	0.75 in (19 mm)	90	2,700 parts/pal	-
BASE-1015	1 - 1.5 in (26-38 mm)	90	2,700 parts/pal	1,750
BASE-2025	2 - 2.5 in (52-64 mm)	60	1,800 parts/pal	1,400
BASE-3035	3 - 3.5 in (76-90 mm)	50	1,500 parts/pal	1,200
BASE-4000	3.75 - 4 in (95-102 mm)	45	1,350 parts/pal	1,100



# Carnie Cap

Carnie Cap is the most effective way to cover exposed rebar and reduce the risk of worker impalement. This unique approach requires only two units for every eight feet of coverage, and can withstand the impact of a 250 lb weight dropped from a height of 7 1/2 feet! Eliminating jobsite injuries, installation time and inventory overheads.



Product name	Board fit	Bar diameter	Quantity per box
CC-100	2 x 4	10 to 20 mm	50
CC-200	2 x 6	15 to 55 mm	100



# Safety cap

Plasti-Tom safety caps have been designed to effectively protect workers from the risk of injury caused by exposed rebar on construction sites. Made from tough, durable materials, they provide reliable protection while fitting quickly over rebar.

Whether for residential, commercial or industrial applications, the Plasti-Tom safety caps are a simple, effective solution that complies with best safety practices on construction sites. Their design provides excellent hold-in-place, even in demanding work environments.



Product name	Bar diameter	Quantity per bag
CAP-100	10 to 20 mm	300
CAP-200	15 to 35 mm	100



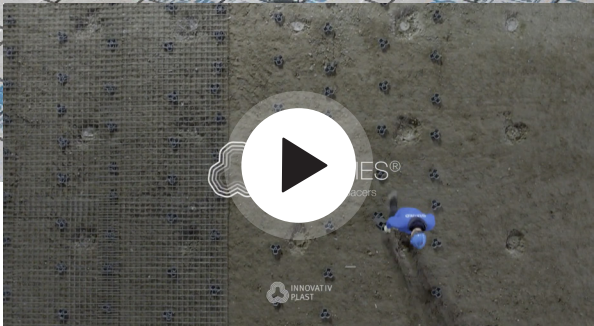
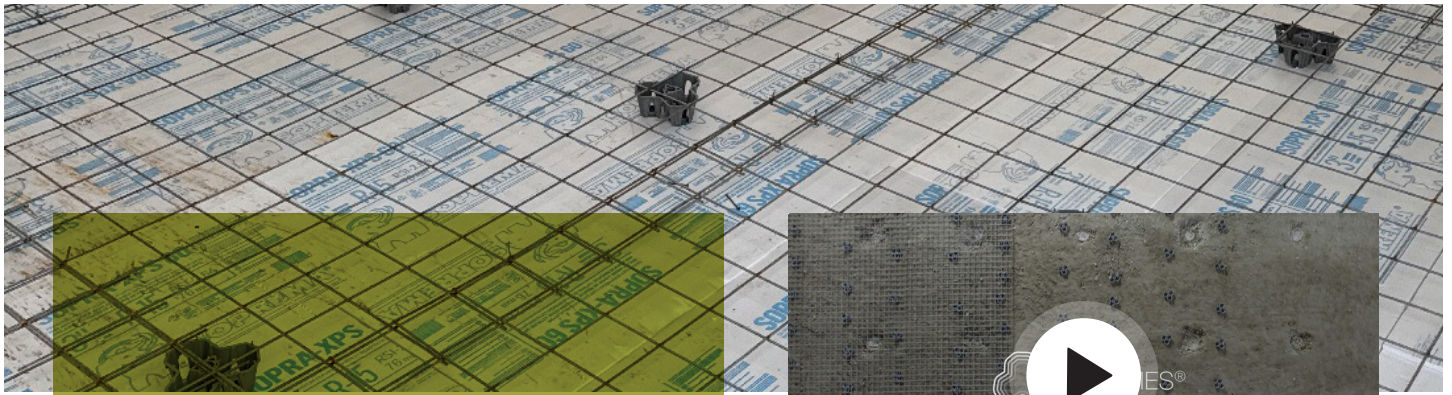
# Pile Spacer

On construction sites, it is essential to position reinforcements while adhering to the specified spacing requirements. Pile spacers are plastic skates designed to guide and align reinforcement cages. They ensure the lateral positioning and centering of these cages within the formworks of columns, elevators, and bored piles. Our range of spacer guarantees compliance with distance requirements and keeps the reinforcements perfectly centered during both the cage installation and the concrete pouring process.

Easy to install, these spacers help reduce costs and installation time. Made from high-density material, they are exceptionally durable and specifically designed for bored pile construction, while also being well-suited for other vertical applications. They provide contractors, engineers, and inspectors with peace of mind, ensuring that reinforcement cages are always correctly positioned.



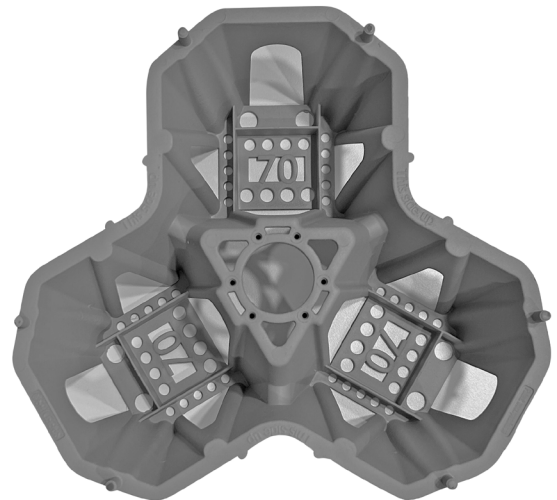
Product name	Height	Quantity per bag	Quantity per pallet	Compression Test (lbs)
PIL-150	1.5 in (38 mm)	50	1,500	1,400
PIL-150-S	1.5 in (38 mm)	50	1,500	1,400
PIL-200	2.0 in (51 mm)	35	1,050	1,400
PIL-250	2.5 in (64 mm)	30	900	1,350
PIL-300	3.0 in (76 mm)	27	810	1,200
PIL-350	3.5 in (89 mm)	20	600	1,150
PIL-400	4.0 in (102 mm)	18	540	1,100



# Speedies

Speedies® is the new generation of spacers for reinforcing mesh, offering support whatever their position on the floor. Economical, incredibly fast and surprisingly easy to use, they'll quickly become your new installation accessory of choice!

Speedies® are designed for foundation slabs and uneven ground surfaces. With its cup shape, large base and high resistance to pressure, there's no risk of it sinking into the ground or collapsing under its own weight. Approximately 1.0 to 1.5 units per square meter are recommended. With Speedies®, you can save up to 95 % of time compared with competing products. What's more, the working method is much more ergonomic. Thanks to Speedies® and the installation tool (installation stick), you no longer need to kneel, bend or stretch on tiptoe in the reinforcement. Simply spread them out, lay the mesh, and you're done!



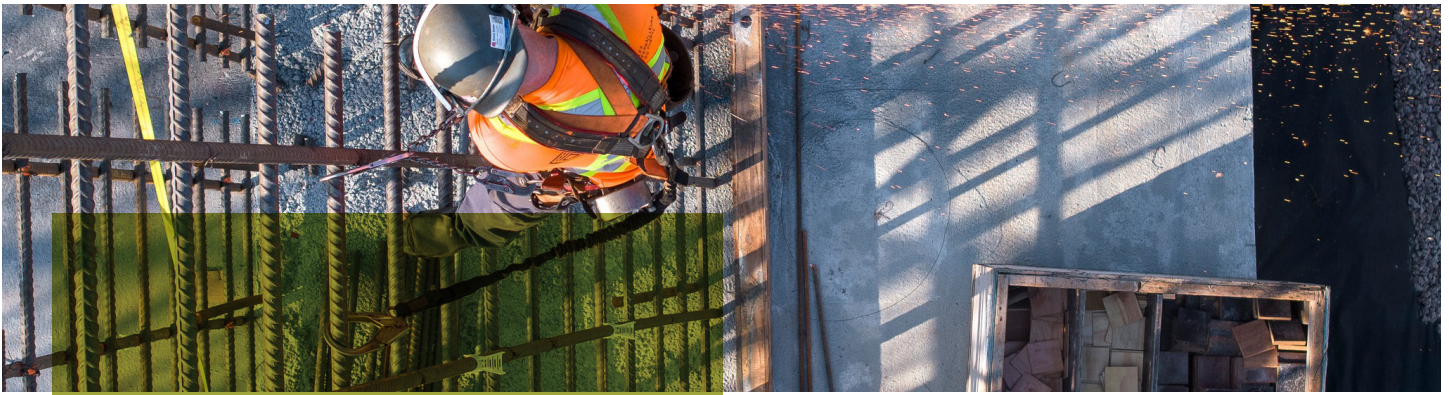
## Speedies Foundation

Product name	Height	Quantity per bag	Quantity per pallet	Compression Test (lbs)
SPD-25	1.0 in (25 mm)	50	2,450	600
SPD-40	1.5 in (40 mm)	50	2,450	600
SPD-50	2.0 in (50 mm)	50	2,450	600
SPD-60	2.35 in (60 mm)	50	2,450	500
SPD-70	2.75 in (70 mm)	50	2,450	500

## Speedies Ceiling

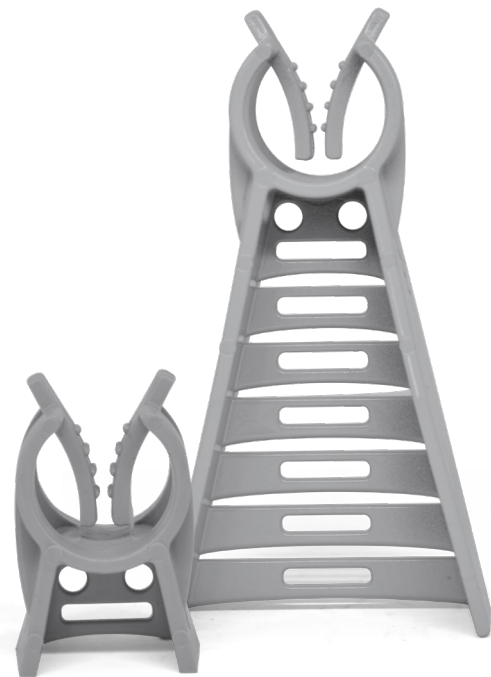
SPD-25P	1.0 in (25 mm)	50	2,450	-
SPD-40P	1.5 in (40 mm)	50	2,450	-



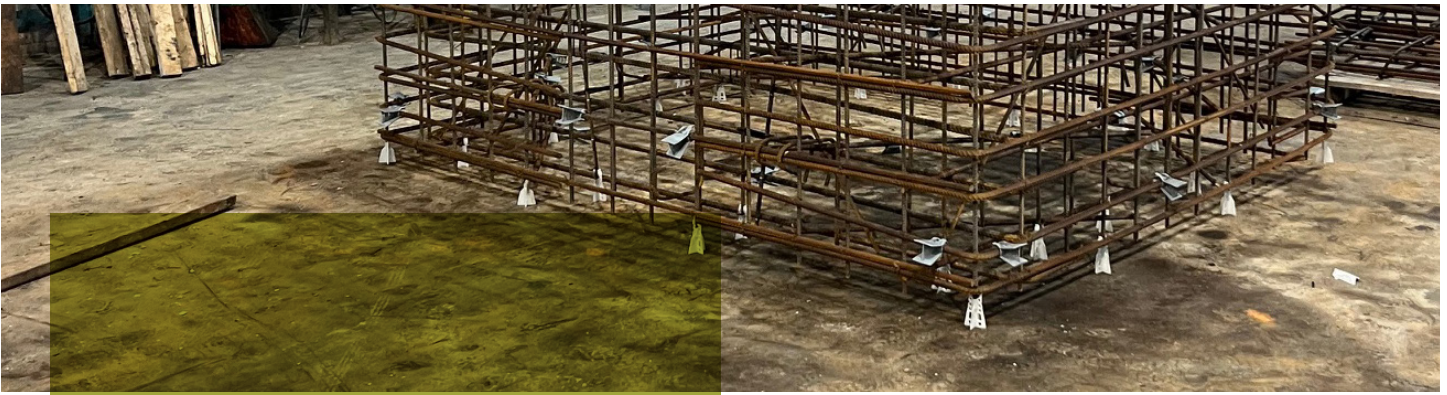


# Universal Clip Chair

The universal clip chair is designed to support horizontal and vertical steel studs on heavy-duty jobs. All chair sizes can accommodate rebar from 8 mm to 30 mm on the same chair, so their flexibility will enable you to reduce your inventory. They are designed with a unique, highly stable retaining system. These chairs offer equal coverage for vertical steel studs such as foundation walls, elevator shafts and support beams. They are also ideal for supporting rebar during formwork. Their unrivalled strength also means they can be used to make lamppost bases and precast concrete slabs. This product ensures optimum concrete flow to help prevent voids or linear cracks in concrete.

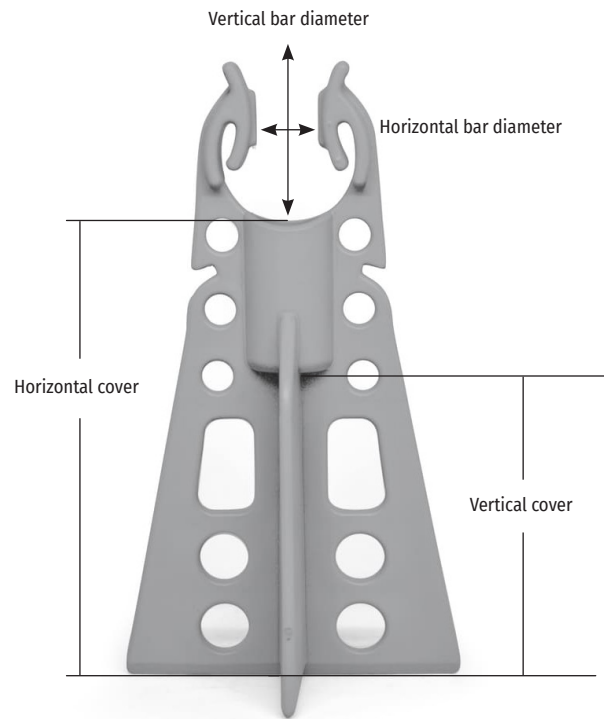


Product name	Cover	Bar diameter	Quantity per bag	Quantity per pallet	Compression Test (lbs)
CH-100-U	1 in (25 mm)	8 mm to 30 mm	400	12,000 parts/pal	650
CH-125-U	1.25 in (32 mm)	8 mm to 30 mm	400	12,000 parts/pal	625
CH-150-U	1.5 in (38 mm)	8 mm to 30 mm	300	9,000 parts/pal	625
CH-200-U	2 in (52 mm)	8 mm to 30 mm	250	7,500 parts/pal	575
CH-250-U	2.5 in (63 mm)	8 mm to 30 mm	200	6,000 parts/pal	525
CH-300-U	3 in (76 mm)	8 mm to 30 mm	150	4,500 parts/pal	450
CH-350-U	3.5 in (89 mm)	8 mm to 30 mm	125	3,750 parts/pal	375
CH-400-U	4 in (102 mm)	8 mm to 30 mm	100	3,000 parts/pal	350



# Clip Chair

The clip chair is designed to support horizontal and vertical steel uprights by the end caps during heavy-duty work. All chair sizes can accommodate up to 20 mm reinforcement on the same chair horizontally, and 10 mm reinforcement vertically. Their flexibility means you can reduce your inventory. The clip chair is designed with a very stable retaining system, while allowing the free flow of concrete.



Product name	Horizontal cover	Vertical cover	Bar diameter Horizontal	Bar diameter Vertical	Quantity per bag
12X02 CL20	1.25 in (32 mm)	0.5 in (13 mm)	up to 20 mm	10 mm	1,000
15X05 CL20	1.5 in (38 mm)	0.5 in (13 mm)	up to 20 mm	10 mm	1,000
20X10 CL20	2 in (50 mm)	1 in (25 mm)	up to 20 mm	10 mm	500
25X15 CL20	2.5 in (62.5 mm)	1.5 in (28 mm)	up to 20 mm	10 mm	500
30X20 CL20	3 in (75 mm)	2 in (50 mm)	up to 20 mm	10 mm	400
35X25 CL20	3.5 in (87.5 mm)	2.5 in (62.5 mm)	15-20 mm	10 mm	200



# Circular Chair

Circular chairs are designed for vertical reinforcement. These casters provide even coverage for vertical steel studs such as foundation walls, elevator shafts and support beams. Their cutting-edge design is ideal for any architectural fabrication where concrete is exposed. This product ensures optimum concrete flow to help prevent voids or linear cracks in concrete.

They allow covers between 1 and 3 inches and can accommodate reinforcement ranging from 6 to 25 mm thanks to the different cores.



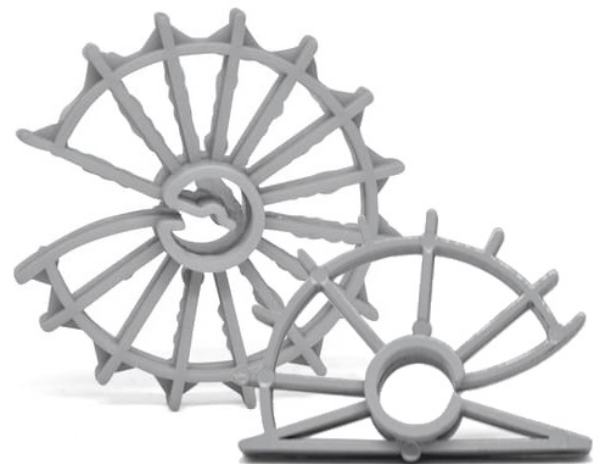
Product name	Cover	Reinforcement – mesh	Diameter	Quantity per bag
NEL-100	30 mm	6 mm	2.6 in (66 mm)	600
NEL-100 A	31 mm	8 mm	2.6 in (66 mm)	600
NEL-100 B	28 mm	10-15 mm	2.6 in (66 mm)	600
NEL-100 C	28 mm	15-20 mm	2.6 in (66 mm)	600
NEL-100 D	25 mm	25 mm	2.6 in (66 mm)	600
NEL-125	33 mm	6 mm	2.9 in (73 mm)	500
NEL-125 A	32 mm	8 mm	2.9 in (73 mm)	500
NEL-125 B	30 mm	10-15 mm	2.9 in (73 mm)	500
NEL-125 C	30 mm	15-20 mm	2.9 in (73 mm)	500
NEL-125 D	28 mm	25 mm	2.9 in (73 mm)	500

Product name	Cover	Reinforcement – mesh	Diameter	Quantity per bag
NEL-150	42 mm	6 mm	3.5 in (89 mm)	400
NEL-150 A	40 mm	8 mm	3.5 in (89 mm)	400
NEL-150 B	40 mm	10-15 mm	3.5 in (89 mm)	400
NEL-150 C	38 mm	15-20 mm	3.5 in (89 mm)	400
NEL-150 D	34 mm	25 mm	3.5 in (89 mm)	400
NEL-200	52 mm	6 mm	4.3 in (110 mm)	200
NEL-200 A	52 mm	8 mm	4.3 in (110 mm)	200
NEL-200 B	50 mm	10-15 mm	4.3 in (110 mm)	200
NEL-200 C	50 mm	15-20 mm	4.3 in (110 mm)	200
NEL-200 D	44 mm	25 mm	4.3 in (110 mm)	200
NEL-250	63 mm	6 mm	5.12 in (130 mm)	150
NEL-250 A	63 mm	8 mm	5.12 in (130 mm)	150
NEL-250 B	60 mm	10-15 mm	5.12 in (130 mm)	150
NEL-250 C	57 mm	15-20 mm	5.12 in (130 mm)	150
NEL-250 D	53 mm	25 mm	5.12 in (130 mm)	150
NEL-275	75 mm	6 mm	6 in (152 mm)	100
NEL-275 A	73 mm	8 mm	6 in (152 mm)	100
NEL-275 B	70 mm	10-15 mm	6 in (152 mm)	100
NEL-275 C	66 mm	15-20 mm	6 in (152 mm)	100
NEL-275 D	63 mm	25 mm	6 in (152 mm)	100
NEL-300	82 mm	6 mm	6.7 in (170 mm)	100
NEL-300 A	80 mm	8 mm	6.7 in (170 mm)	100
NEL-300 B	80 mm	10-15 mm	6.7 in (170 mm)	100
NEL-300 C	76 mm	15-20 mm	6.7 in (170 mm)	100
NEL-300 D	73 mm	25 mm	6.7 in (170 mm)	100

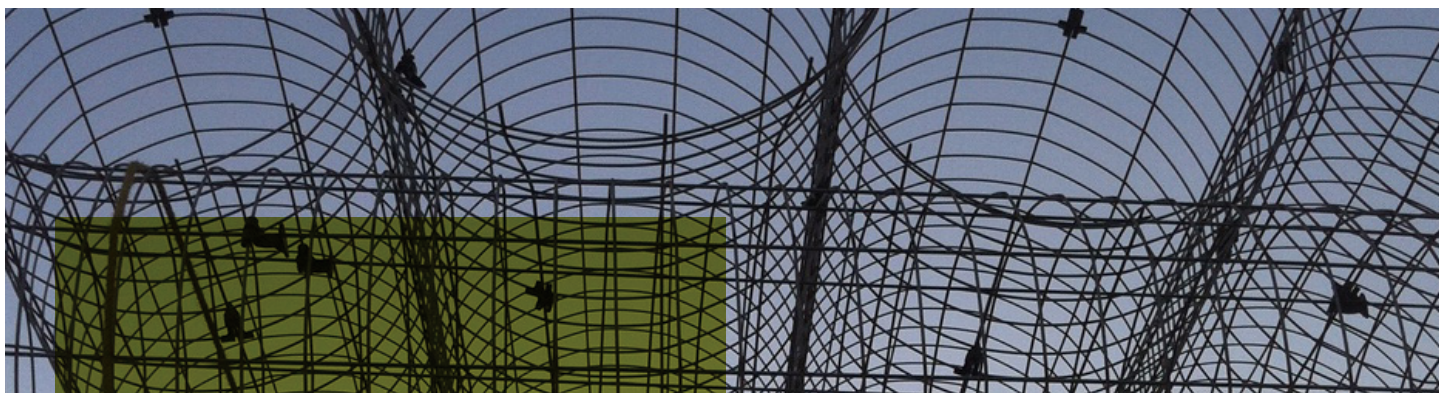


# Circular Chair (MESH)

Circular chairs are designed for vertical reinforcement, pre-molding and other applications. These circular chairs are designed to accommodate steel wire from 4 to 8 mm, providing even coverage for vertical uprights in all types of applications.



Product name	Cover	Reinforcement – mesh	Diameter	Quantity per bag
NEL-499	0.5 in (13 mm)	4 mm	1.125 in (30 mm)	5,000
NEL-499 C	0.5 in (13 mm)	4 mm	0.5625 in (20 mm)	5,000
NEL-500	1 in (26 mm)	6 mm	2.375 in (60 mm)	1,000
NEL-501	1 in (26 mm)	6-8 mm	2.375 in (60 mm)	1,000
NEL-501 C	1 in (26 mm)	6-8 mm	1.5625 in (40 mm)	1,000
NEL-502	1 in (26 mm)	10 mm	2.375 in (60 mm)	1,000
NEL-502 C	1 in (26 mm)	10 mm	1.5625 in (40 mm)	1,000
NEL-503	1 in (26 mm)	6 mm	2.375 in (60 mm)	1,000
NEL-503 C	1 in (26 mm)	6 mm	1.5625 in (40 mm)	1,000
NEL-504	1 in (26 mm)	6-8 mm	2.375 in (60 mm)	1,000
NEL-505	1 in (26 mm)	10 mm	2.375 in (60 mm)	1,000
NEL-506	1.25 in (34 mm)	6 mm	2.875 in (73 mm)	800
NEL-507	1.25 in (34 mm)	10 mm	2.875 in (73 mm)	800
NEL-508	1.25 in (34 mm)	6-8 mm	2.875 in (73 mm)	800



## Spacer hook

Our spacer hooks are suitable for 6 mm and 8 mm wire mesh. These hooks are the fast, precise and safe solution for positioning reinforcing mesh in your molds. A wire mesh spacer placed every 12 to 18 inches around the top and bottom of the reinforcing cage ensures the required spacing between the reinforcement and the formwork surface to achieve the desired concrete cover, while preventing the cage from moving during the fabrication of the work.



Product name	Cover	Bar diameter	Quantity per bag
CR-100	1 in (25 mm)	6-8 mm	1,000
CR-138	1.25 in (32 mm)	6-8 mm	1,000
CR-150	1.5 in (38 mm)	6-8 mm	1,000
CR-175	1.75 in (46 mm)	6-8 mm	1,000
CR-200	2 in (52 mm)	6-8 mm	1,000



# Lattice spacer

The fast, accurate and safe way to position mesh reinforcement in small and medium diameter concrete pipe and manholes. One lattice spacer applied every 12" to 18" around the top and bottom of the reinforcement cage will space the reinforcement from the form surface for the desired concrete cover and prevent the cage from shifting during pipe production



## 2000 serie - 2 in trellis (51 mm)

Product name	Cover	Bar diameter	Quantity per bag
2125-W9	1.25 in (32 mm)	0.338 in (8.6 mm)	800
2125-W14	1.25 in (32 mm)	0.422 in (10.72 mm)	800
2125-W18	1.25 in (32 mm)	0.479 in (12.17 mm)	800
2140-W9	1.5 in (40 mm)	0.338 in (8.6 mm)	800
2140-W14	1.5 in (40 mm)	0.422 in (10.72 mm)	800
2140-W18	1.5 in (40 mm)	0.479 in (12.17 mm)	800
2150-W9	2 in (50 mm)	0.338 in (8.6 mm)	800
2150-W14	2 in (50 mm)	0.422 in (10.72 mm)	800
2150-W18	2 in (50 mm)	0.479 in (12.17 mm)	800

## 3000 serie - 3 in trellis (76 mm)

Product name	Cover	Bar diameter	Quantity per bag
3075	0.75 in (18 mm)	6-8 mm	600
3100	1 in (25 mm)	6-8 mm	600
3125	1.25 in (32 mm)	6-8 mm	600
3150	1.5 in (40 mm)	6-8 mm	600
3250	2.5 in (64 mm)	6-8 mm	500
3300	3 in (76 mm)	6-8 mm	500



## Vertical support

PLASTI-TOM vertical reinforcement supports are a simple, economical way of supporting and vertically spacing steel reinforcement at the base of prefabricated steel cages. An added benefit of vertical reinforcement supports is that the encapsulation of the steel stud ends offers extra protection against corrosion.



Product name	Cover	Bar diameter	Quantity per bag
SUP #498 8 mm	2 in (52 mm)	8 mm	500
SUP #498 V 8 mm	2.25 in (58 mm)	8 mm	500
SUP #498 10 mm	2 in (52 mm)	10 mm	500
SUP #498 V 10 mm	2.25 in (58 mm)	10 mm	500
SUP #498 15 mm	0.5 in (13 mm) & 2in (52 mm)	10 mm & 15 mm	500
SUP #498 V 15 mm	0.75 in (19 mm) & 2.25 in (58 mm)	10 mm & 15 mm	500
SUP #498 20 mm	0.5 in (13 mm) & 2in (52 mm)	10 mm & 20 mm	500
SUP #498 V 20 mm	0.75 in (19 mm) & 2.25 in (58 mm)	10 mm & 20 mm	500
SUP #498-20mm-P	0.5 in (13 mm)	20 mm	500



# Lifting insert

Lifting inserts are designed to give a hollow shape to your precast concrete parts, which serves as an anchor for our lifting tools. Used in conjunction with each other, lifting inserts make handling precast concrete parts on your worksite easier and safer. Our lifting inserts can be used to lift the heaviest concrete pipes, because once covered with cement, the inking is of unequalled strength. Lifting inserts can be installed in your concrete molds with the installation tools.



Product name	Height	Quantity per bag
NEL-D 250	2.5 in (63 mm)	180
NEL-D 250 RL	3.25 in (82.5 mm)	120
NEL-D 325	3.25 in (82.5 mm)	140
NEL-S 250	2.5 in (63 mm)	200
NEL-S 350	3.5 in (89 mm)	140
NEL-S 350-R	4 in (100 mm)	192
NEL-S 400-R	4.5 in (113 mm)	175
NEL-S 400	4 in (100 mm)	125
NEL-S 400-B	4 in (100 mm)	125



# Installation tool

PLASTI-TOM's installation tools are made of flexible resin, enabling the installation of double and single lifting inserts in your concrete molds. When screwed in, the resin expands inside the lifting insert, holding it in place while preventing concrete from seeping through.



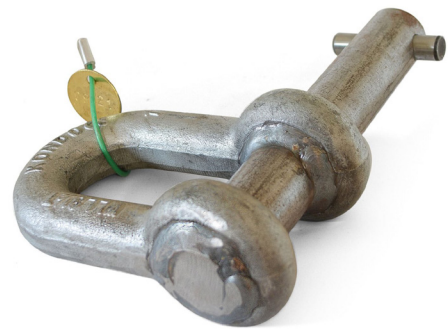
Product name	Diameter	Length
GA-01 (Simple)	1.25 in (63 mm)	1.75 in (46 mm)
GA-01D (Double)	2.3125 in (63 mm)	1.5 in (38 mm)

# Lifting tool

Our certified 2000 lbs lifting shackles are used to lift precast concrete parts of all kinds. Generally used to lift manhole pipes, our lifting keys must be used with PLASTI-TOM lifting inserts.

Lifting keys are manufactured for double and single insertions.

For use with «NEL-D» series double lifting inserts



Product name	Length
ACC-1 Simple	1.25 in (32 mm)
ACC-2 Double	1.25 in (32 mm)



## Certified Manhole step

100% Polymer composite rung (no metal)

**Benefits:**

- Certified to current standards
- Corrosion protection
- Resistance to UV rays
- Non-slip and safe
- Lightweight and easy to carry
- Visible color
- Cost of transport reduced
- Highly competitive price

Quantity per pallet: 250 units



## Rungs-Installation hammer

Our nitrile hammers are ideal for installing our rungs in concrete, without damaging the rung, while being «anti-bounce» to facilitate high-volume installation.

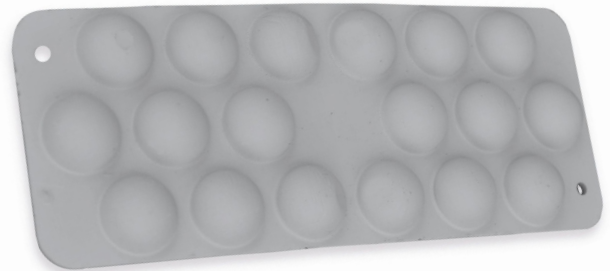




# Protective Pads

Single-sided bubble wrap and protective sheet. Can be folded in the center.

PALSTI-TOM's Bubble Pads are designed to protect concrete parts that need to be stacked or packed for storage. Bubble Pads prevent moisture marks left by wood or concrete in contact with each other. Made from high-density plastic, they're tough and won't leave a mark on your precast concrete parts.



Product name	Dimensions	Quantity per bag
NAT-397	54 mm (2.125 in) x 140 mm (5.5 in)	400

# Panel ID

PLASTI-TOM ID Panels identify your precast concrete parts. Avoid errors on site, thanks to clear, efficient identification of your products at the factory.

Quantity per box: 250 units





# Cap

Our plugs are perfect for protecting your BNQ or PVC pipes against concrete run-off during pouring! Available for pipes with internal diameters of 0.75 inches, 4 inches and 4.5 inches.



Product name	Diameter	Quantity per bag
BC-075	0.75 in	1,000
BC-425	4 in	100
BC-475	4.5 in	100





875, rue Industrielle  
Saint-Frédéric (Quebec) G0N 1P0  
418 426-3333 | info@plastitom.com

[www.plastitom.com](http://www.plastitom.com)